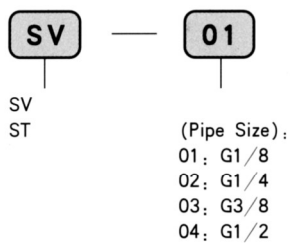


### Speed Control Valve:

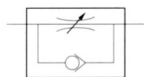
It is a one-way flow control valve which can regulate the flow of compressed air in air passage. It will control forward flow and not control reversed flow, so as to change the one-way movement speed of executive components such as air cylinder.



### Ordering Code



### Graphics Sign

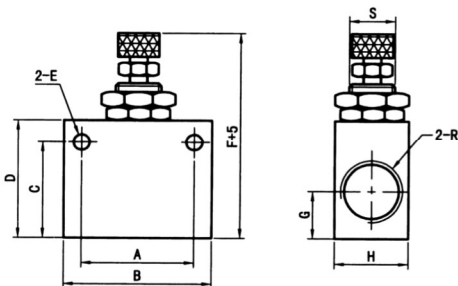


### Technical Parameter

(Specification) / (Item)	(Pipe Thread)	(Applicable Fluid)	(Min. Operating Pressure)	(Pressure Range)	(Applicable Temperature)	
(Precision Type)	SV-01	G1/8	0.03MPa	0.05~1.2 MPa	-5~99°C	
	SV-02	G1/4				
	SV-03	G3/8				
	SV-04	G1/2				
(Basic Type)	ST-01	G1/8		(Compressed Air)	0.05~0.8 MPa	-5~60°C
	ST-02	G1/4				
	ST-03	G3/8				
	ST-04	G1/2				

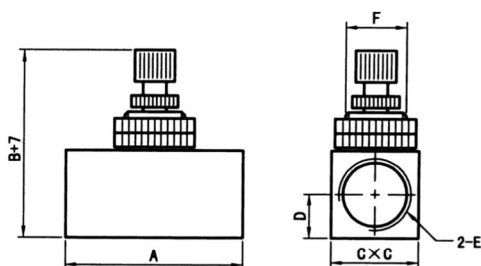
### Figure Dimension

#### Precision Type



Specification	SV-01	SV-02	SV-03	SV-04
A	20	20	38	38
B	35	35	50	50
C	21	21	32	32
D	26	26	40	40
E	φ 4.5	φ 4.5	φ 5.5	φ 5.5
F	50	50	68	68
G	10	10	16	16
H	16	19	25	25
R	G1/8	G1/4	G3/8	G1/2
S	M12	M12	M16	M16

#### Basic Type



(Specification)	ST-01	ST-02	ST-03	ST-04
A	46	46	53	53
B	43	43	51	51
C	19	19	26	26
D	9	9	13	13
E	G1/8	G1/4	G3/8	G1/2
F	M14	M14	M16	M16